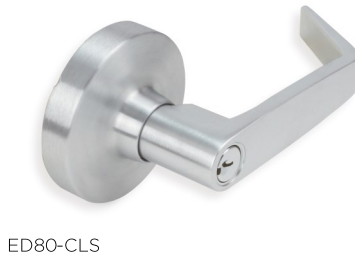


Panic Exit Device



Material: steel, aluminum, stainless steel
 Latch Bolt: 3/4" throw, stainless steel
 Strike: 5/8" stop, shim for 1/2" stop included
 Projection: 2 1/2" max, 1 7/8" engaged
 Handing: reversible
 Door Thickness: 1 3/4"
 Backset: 2 3/4"
 Door Width: 3-4'
 Max Door Height for ED7100-AV: 7' (213.36cm)
 Stile: minimum 4 1/4" , 2 1/4" for narrow
 Dogging: 1/4 turn hex key
 UL: 1 1/2 hour fire rated

DESCRIPTION	PRODUCT CODE	CASE
Panic Exit Device, Rim Type, Dogging, Silver Powder Coat	ED7100-SL	6
Vertical Rod Panic Exit Device, Silver Powder Coat, With Dogging	ED7100-AV	6

Exterior Trim

DESCRIPTION	PRODUCT CODE	CASE
Jackson Lever, Classroom Function (outside lever locks or unlocks with key)	ED80-CLS	6
Jackson Lever, Storeroom Function (outside is always locked and a key is required to open)	ED80-SLS	6
Panic Exit Device Passage Trim	ED80-PAS	6
Keyed Cylinder and Cup Pull (outside deadbolt cylinder locks or unlocks with key)	ED80-NLS	6
Exterior Trim Flat Plate with Storeroom Cylinder	DCPL	6